



## **Full Service** **Lubrication Change out of Mission Critical Turbo Machinery**



Long Win Thai Co.,Ltd 2 Banplong Rd,T Maptaphud, A.Muang, Rayong 21150, ThailandT. (+6638) 692443-4 F. (+6638) 692151

## Table of Contents

Procedure	Section 1
Site reference	Section 2
Result	Section 3
Machine & Tool Detail	Section 4

## **Section 2 Site Pictures Reference** **Full Service Lubrication Change out of Mission Critical Turbo Machinery**

### **Project detail**

- **Transfer oil to tank**
- **Clean Lube oil reservoir**
- **Transfer oil to main reservoir**

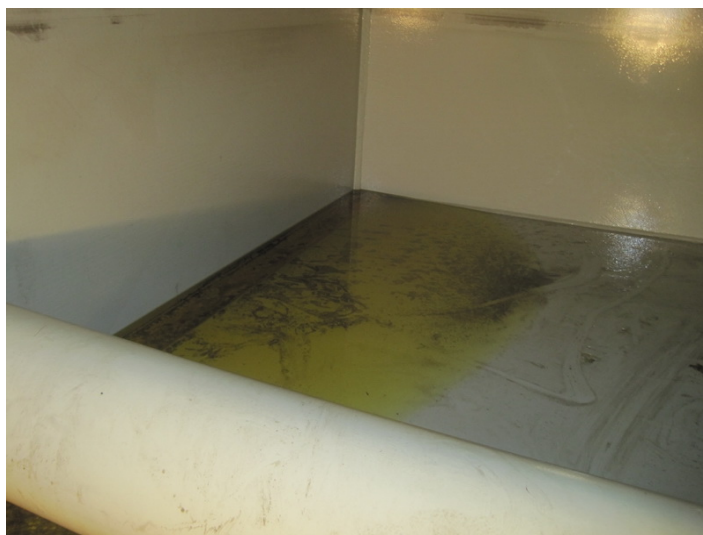
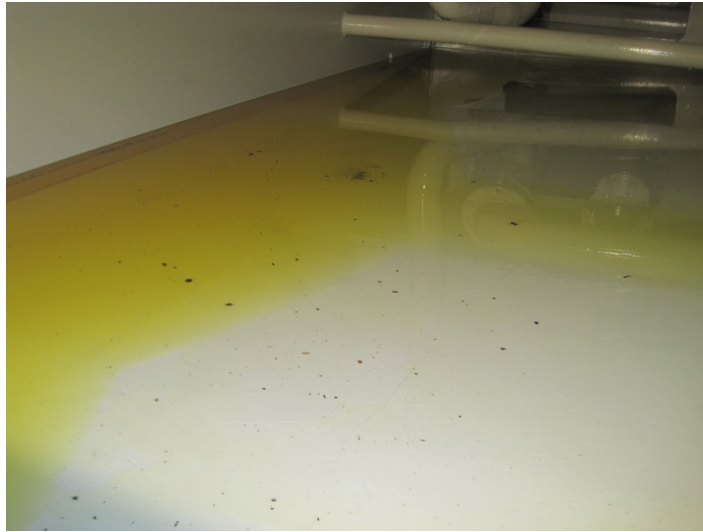


Our tank and Clean Cart unit for remove wear particle solid particles

**Section 3 Result**

**Gas Turbine Reservoir Cleaning**

**Before Clean reservoir**



**After clean reservoir**



## Section 4 Machine and Tool Detail

# LF/LFM - Low Pressure High Flow Assemblies

LF flow rate to 1120 lpm, 300 gpm / LFM flow rate to 16875 lpm, 4500 gpm



### APPLICATIONS

- Hydraulic and Lubrication oil
- Fuel and Fuel oil
- Rolling mill oil
- Processing liquids
- Bulk oil handling - Transfer and clean up
- Off-line systems and flushing
- Power generation
- Primary metals
- Mobile flushing systems
- Particulate and water removal
- Transfer line machining coolants
- Large gearbox filtration

### PRODUCT SPECIFICATIONS & FEATURES

Max Flow Rate Visc: 150 SUS, 32 CTS	Recommended Series
100 gpm (375 lpm)	LF Single length
150 gpm (560 lpm)	LF Double length
300 gpm (1125 lpm) 4500 gpm (16875 lpm)	2 x LF Double parallel mount LFM multiple element series (call for sizing assistance)
<b>Operating Pressure</b>	<b>Standard 150 psi (10 bar)</b> Available up to 3000 psi (212 bar)
<b>Pressure Indicators</b>	<b>Supplied Standard</b>
Up to 250 psi Operating	Two visual pressure gages differential indicator available
450 psi and higher	Differential pressure supplied standard
<b>Maximum Temperature</b>	<b>Standard 250 F</b> Call for high temperature specs

### ASME U & UM CODE REQUIREMENTS

Standard vessels are manufactured to ASME code standards, but not certified. ASME U and UM code certification is available as an option. See table 9 under the Filter Assembly part number guide on page 2 for ordering detail. Please call for price adders when specifying Code certification.

- Carbon steel construction standard (304 & 316 stainless available).
- Duplexing option available for continuous filtration during filter element change-out.
- In-line and 90 degree port configuration available .
- Pressure gages are supplied standard for housings up to 250 psi operating (differential indicator is available). Differential pressure indicator is supplied standard for housings with operating pressure 450 psi and higher.
- Easy to service swing-lid design with eye nuts assures no lost hardware, hydraulic lift option available.
- Marine grade epoxy exterior finish for non-stainless steel assemblies
- Accepts coreless design with positive o-ring seals or industry standard 6 x 18 and 6 x 36 with gasket seals.
- Vent/bleed port standard in housing cover.
- 2" drain and cleanout port allows for quick draining and easy access for sump cleanout.
- Hy-Pro Dualglass filter element media technology validated per ISO16889 multipass and DFE (modified ISO16889) industry leading multipass testing.